

Fondation Eagle

Report Form

Fondation Eagle reference: FF 606

Name of charity: Mary's Meals

Date grant accepted: 24th September 2021

Amount: CHF 50,530

Period of project: 12 months: 1st October 2021- 31st September 2022

Introduction:

Fondation Eagle is financing the total of CHF50,530 for the school feeding programme for one year for the pupils at primary school in Balaka District, Southern Malawi, namely Nsaluzawana Primary School and Chiyendausiku Primary School. School feeding will be delivered under this project from 1st October 2021 to 31st September 2022 and reach 2,477 children.

Details of the project:

Mary's Meals is incredibly thankful for the ongoing support of the Fondation Eagle. Your generous donation of CHF 50,530 has ensured we are able to provide our life-changing meals to 2,477 children in Malawi, bringing them hope during challenging times. Your support has helped us strengthen and realise our vision that every child should receive a nutritious meal in their place of education every single school day, giving them a chance at a brighter future.

The current context:

The continued support from the Fondation Eagle over this year has ensured we were able to keep providing our meals to children who faced and continue to experience heightened food insecurity. We are delighted that schools are open again after longer periods of closure throughout 2020 and 2021 due to Covid 19. Such closures have had a detrimental impact on global childhood education, that could undo decades of progress, particularly in developing countries that Mary's Meals operates. In 2022, UNESCO reports that children in most countries are falling behind in their education¹.

The Covid-19 pandemic has caused the worst educational crisis in human history, with 1.5 billion children suddenly prevented from attending school². It is estimated that in 2020, one in every two school children (388 million) received school meals worldwide across at least 161 countries³. Once the pandemic hit, and schools were forced to close, 370 million children around the world were left without their one meal of the day⁴. This is why our school feeding programme is crucial as it is often these children's only source of food for the school day, and why we were determined to keep providing our life-changing meals in the form of take-home rations during school closures. Now schools are open again, it is imperative to continue

¹ Unicef.org. 2022. *Children in most countries are falling behind in education due to COVID-19 pandemic.*

(<https://www.unicef.org/thailand/press-releases/children-most-countries-are-falling-behind-education-due-covid-19-pandemic>).

² Medicine, L. and Medicine, L., 2022. *COVID has left 370 million school children without their one reliable meal – what can be done?* | LSHTM. (<https://www.lshtm.ac.uk/newsevents/news/2021/covid-has-left-370-million-school-children-without-their-one-reliable-meal>)

³ Ibid

⁴ Ibid

providing school feeding to encourage children to enrol and attend school each day, helping mitigate an educational crisis caused by the pandemic.

Mary's Meals school feeding is an effective vehicle to ensure children's proper nutritional, cognitive, educational and social needs are met⁵. School feeding also has a wider positive impact on the families and the communities where Mary's Meals operates. In light of the pandemic, our work is now more important than ever as Covid-19 has further compounded and exacerbated the already difficult reality which marginalised communities and children face around the world- many of which we work with. Children and their families face even more challenging situations than before, with food insecurity being one of the biggest issues. Mary's Meals is working to address this issue through providing nutritious meals every single school day. Our school feeding programme is vital as it creates a huge incentive for children to come to school through the promise of a daily meal, enabling them to gain a valuable education.

The context in Malawi

Our work in Malawi started over two decades ago and, began with feeding in just one school. This programme has grown enormously over the years, and today Malawi is our largest school feeding programme, providing meals to 1,072,884 children across 1,044 schools.

Malawi ranks 174 out of 189 on the Human Development Index According to the UNDP, with 39% of children under five in Malawi facing chronic malnutrition and stunting (UNDP, 2021). The high rate of malnutrition also impacts school drop-out rates, resulting in 45.9% of primary school children not completing primary education (UNDP, 2021). This high rate can be explained by the fact that due to daily food insecurity and chronic hunger, many children spend their day sourcing food rather than attending school. In cases where the children do attend, they are often too hungry to concentrate in class. Such high rates of malnutrition, stunting and primary school drop-out demonstrate the great need for Mary's Meals school feeding program in Malawi. Daily school meals meet the immediate needs of the hungry child whilst also tackling the underlying cause of their poverty by enabling them to receive an education, unlocking better health and job prospects and breaking the cycle of poverty.

Presently, 2.8 million people in Malawi have insufficient food consumption and 39% of children under the age of 5 are suffering from chronic malnutrition⁶. These figures are a testament to the need for and importance of our school feeding programme, particularly in light of the pandemic, as many children do not attend school or have not returned into the classroom due to hunger related issues. Our school feeding programme removes the hunger barrier that often prevents children from attending school, instead they may be working to buy food or sourcing their next meal.

Malawi is a largely agricultural society and is therefore very susceptible to climatic shocks such as droughts and floods. Prior to the pandemic, over 3.3 million people in Malawi were at a 'crisis' or 'emergency' level of food insecurity⁷, which the Covid-19 pandemic further exacerbated by reducing their livelihoods, and access to food supplies and markets. In the Southern region of Malawi, where this project is based, 11.67% of the population have insufficient food consumption and 30.81% have crisis or above crisis food consumption⁸. Our school feeding programme is vital as it provides these children with the right nutrients to grow

⁵ Frontiers. 2022. *Covid-19: School and Community Feeding Programs for Children and Young People*. [online] <https://www.frontiersin.org/research-topics/14948/covid-19-school-and-community-feeding-programs-for-children-and-young-people>

⁶ Hungermap.wfp.org. 2022. *HungerMap LIVE*. (<https://hungermap.wfp.org>)

⁷ [Malawi | OCHA \(unocha.org\)](https://www.unocha.org/malawi)

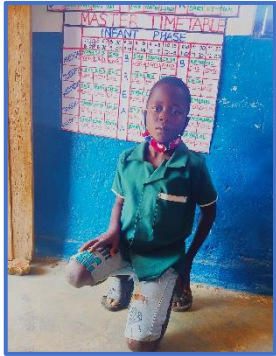
⁸ WFP, *HungerMap LIVE*. October 2021. (<https://hungermap.wfp.org>)

and develop physically all the while gaining a valuable education, which could be the tool to lift them, and their communities, out of poverty in the future.

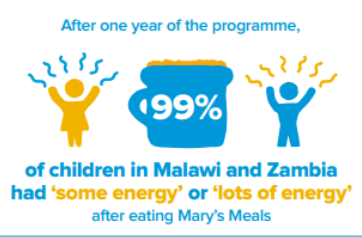
Throughout a tumultuous year for many children in Malawi, your support in providing a daily meal to vulnerable children has played a crucial role in ensuring these children meet their nutritional needs, as well as played a role in incentivising them to enrol and attend school- which in turn empowers them to gain a life-changing education. This has been particularly important for girls, how often face additional challenges in attending school.

The amazing impact of Mary's Meals

Our school feeding programme changes lives from the very first meal, by helping attract chronically hungry children into the classroom who- due to hunger or hunger related reasons- would have missed out on a valuable education. Your support is making a profound impact on thousands of children's' lives in Malawi, just like Yahaya aged 10 years old. Before Mary's Meals began feeding at his school, Yahaya faced the fate of so many other children who experience food insecurity. Too hungry to concentrate at school, and with no food waiting for him at home, Yahaya dropped out of school at just 10 years old. He had given up on his dreams of completing his studies, and instead helped his family put food on the table by fishing every day. However, this all changed when Mary's Meals began providing our meals at his school, which changed his life and allowed him to continue his education. Speaking of this Yahaya said, "My dreams were shuttered but now I can see light at the end of the tunnel". Our meals are supporting Yahaya and thousands of other children learn in the classroom and pursue a bright and successful future.



More results demonstrating the significant impact Mary's Meals school feeding programme is making to the wellbeing and educational development of the children, even after just one year can be found in [Our Impact Story](#).



Project beneficiaries:

School name	Enrolment (April 2022)		
	Girls	Boys	Total
Nsaluzawana Primary School	505	507	1,012
Chiyendausiku Primary School	543	589	1,132
Rivirivi Primary School	167	166	333
	1,215	1,262	2,477

The support from Fondation Eagle is allowing Mary's Meals to deliver our feeding programme at Nsaluzawana and Chiyendausiku primary schools in Balaka district, reaching thousands of vulnerable children suffering from food insecurity and poverty. You will note in the table above, that enrolment is lower than that of September 2021. Mary's Meals vast experience in Malawi allows us to understand that enrolment fluctuates month by month due to a variety of factors. April is harvest time in Malawi, trends show that during this time enrolment can be lower as families focus on harvesting crops to secure food and income for the coming months. We do expect enrolment to increase in the coming months. Fondation Eagle continues to support all children enrolled at both schools with consistent delivery of school feeding. To ensure all funds are spent in line with the file form, Fondation Eagle is also supporting children at Rivirivi Primary school. In total, Fondation Eagle is supporting 2,477 vulnerable children in Balaka at a time of great need.

Expenditure summary:

School Name	District	Baseline September 2021 enrolment	Current Enrolment April 2022	Difference	Cost per school (CHF)	Cost per school (MWK)*
Nsaluzawana Primary School	Balaka	1,140	1,012	-128	20,644.80	17,885,750.88
Chiyendausiku Primary School	Balaka	1,337	1,132	-205	23,092.80	20,006,590.91
Rivirivi Primary School	Balaka	n/a	333**	+333	6,793.20	5,885,331.07
Totals		2,477	2,477	2,477	50,530.80	43,777,672.87
Spend at April 2022 (7 months of project)					29,476.30	25,536,975.84
Still to spend					21,054.50	18,240,697.03
*Exchange rate: GBP:CHF 1.238 GBP:MWK 1072.549						

**333 children fed with the support of Fondation Eagle between October and April. Mary's Meals ensures all children enrolled in Rivirivi Primary School receive school feeding as part of our wider programme in Malawi.

Results:

School name	Baseline enrolment (September 2021)	Current Enrolment (April 2022)	Change in enrolment
	Total	Total	
Nsaluzawana Primary School	1,140	1,012	-11%
Chiyendausiku Primary School	1,337	1,132	-10%
Sub-total	2,477	2,144	-13%
Rivirivi Primary School	0	333	
Interim report total	2,477	2,477	0%

As explained, enrolment is lower at this reporting point, we expect this to increase as the project continues and more children are encouraged to enroll and attend school each day, as demonstrated in feedback and case studies. The impact of Fondation Eagle's support can be felt in the below case studies.

Case studies:

In order to understand the impact Fondation Eagle is having on the children enrolled in the programme, we visited Nsaluzawana Primary School to hear from those who directly benefit from the programme.



We spoke to 18-year-old, Mangani, who attends Nsaluzawana Primary School in Balaka. Mangani has been enjoying Mary's Meals since he was in Standard 3. Now, six years later, he is in Standard 8, his final year, and still feels the benefit of this meal every day. Mangani tells us: *"When I eat porridge, I do not complain about hunger, I am able to learn and study without any distraction and I am able to attend classes till knocking off time without feeling hungry."* He goes

on to explain, *"If there was no porridge at school, it could have been hard for me to come to school on an empty stomach. Mostly at home there is no food to eat in the morning and it could have been hard for me to concentrate in class. Porridge motivates me not to miss classes. I am active in class because I do not feel hungry."*

With your support, Mary's Meals makes a long-term promise to each child enrolled in our programme, improving their wellbeing and educational outcomes, giving them hope for a better future. When considering his future, Mangani tells us: *"Mary's Meals will help my future*

because I will not drop out of school due to hunger. I am also confident that I will progress to secondary school with good grades.”

During our visit, we also spoke to Yamikani, a teacher at Nsaluzawana Primary School to understand the impact the programme has on educational outcomes, and the wider impact throughout the community. He tells us: *“Since the introduction of the school feeding programme, parents are committed to send children to school because of porridge. Learners are attracted to come to school because they know they will eat porridge. The daily attendance of learners in classrooms is high as learners prefer to come to school and eat porridge rather than stay at home hungry. Absenteeism has reduced among learners and dropouts have also reduced. Importantly, learners who dropped out of school are now returning because of the porridge.”*



Mary’s Meals has a long-term impact on the education attainment in schools, with more children reaching the final grade and passing examinations. Yamikani describes this: *“Most learners are progressing to other grades with flying colors. We have few learners that are repeating grades. The school feeding programme has helped increased the pass rate during Primary School Leaving Examinations (our learners are able to graduate to secondary school) and we have been able to keep learners in school till Standard 8.”*

Community ownership is the cornerstone of Mary’s Meals, empowering communities to own to programme delivery at the school level and promote the importance of school feeding and education for all. To understand this more we spoke to Zion, a volunteer at Nsaluzawana Primary School. She tells us: *“I am the Vice Chairperson for Porridge Committee. My role involves coordinating my fellow women in the community to prepare porridge at school. I also prepare porridge and serve learners. I was encouraged to participate in the SFP because our children are benefitting.”*



Zion tell us of the importance of the school feeding programme in the wider community: *“The community supports the school feeding programme. We have volunteers from surrounding villages who take turns to prepare porridge and parents bring firewood because we need the programme for our children. School feeding supplements the diet for our children as previously most children would go to school on an empty stomach.”* Zion tells us: *“My two children come to school, and they*

receive porridge. This helps my family a lot because my children are very happy when going to school and it reduces the burden of finding food, which is scarce right now. My youngest child who has just started Standard 1 this year was looking forward to schooling because of the porridge. I like Mary’s Meals because they bring CSB flour on time and children do not miss porridge because there is no flour.”

Zion also tells us of the skills she has learned thanks to her role in the school feeding programme and training she has received from Mary’s Meals: *“I have gained various skills such as leadership, stove maintenance, porridge preparation and sanitation. I use these skills in my everyday life. I can lead others in my community, and I also observe good sanitation practices as I prepare food for my family and community activities.”*

Foundation Eagle is playing a crucial role in supporting 2,477 children and their communities in Balaka, Malawi. As world faces increasing uncertainty around food security and climate change, this support is more important than ever, to ensure that children do not have to miss out on an education because of hunger.

Conclusion:

The project is on track to achieve the objectives outlines on the file form, feeding all children at both Nsaluzawana and Chiyendausiku primary schools. The project has also been able to support children at Rivirivi during the period to utilise all funds. As a result of your support to our school feeding program, children in Balaka, Malawi are receiving nutritious meals in school for an entire year. This has had a significant impact on the lives of these vulnerable children; helping them to actively participate in their education through the promise of a daily meal. The project is on track to achieve its objectives by the end of the project

On behalf of all the children supported in your program in Balaka, Malawi, thank you.



Signature and date:

Jeanne Gotsa

April 2022
